

SPRING 2016 SERVICES & PRICING GUIDE

Name: _____ Boat Name: _____

Address: _____ Harbor: _____ Slip/Can# _____

City: _____ ST: _____ Zip: _____ Make: _____

Cell/Contact Phone: _____ Model: _____ Yr _____

Office/Second Phone: _____ Length: _____ Beam: _____ Draft: _____

Email: _____ Key Loc: _____ Combo: _____

Scheduling Reservation

Please return this form at least two weeks prior to your requested departure date. See the rest of the 2016 Spring Service Guide for service details.

No services necessary, just launch my boat: _____ (initial) The mast will be: Up Down None

I will depart on _____ (date) at: _____ (time)

Crowley's will deliver my boat to the harbor by: _____ (date)

**See page four for scheduling Procedures'*

NOTE: Unless otherwise noted the services below do not include materials.

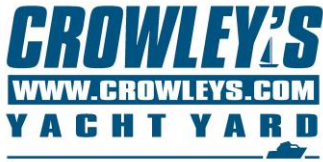
___ SUB 1001 Deliver my boat to Hammond	\$250/trip ¹
___ SUB 1002 Deliver my boat to East Chicago.....	\$335/trip ¹
___ SUB 1003 Deliver my boat to Jackson Park.....	\$275/trip ¹
___ SUB 1004 Deliver my boat to 31st Street	\$350/trip ¹
___ SUB 1005 Deliver my boat to Burnham	\$350/trip ¹
___ SUB 1006 Deliver my boat to Monroe & DuSable.....	\$375/trip ¹
___ SUB 1007 Deliver my boat to Diversey	\$400/trip ¹
___ SUB 1008 Deliver my boat to Belmont	\$425/trip ¹
___ SUB 1009 Deliver my boat to Montrose.....	\$450/trip ¹
___ SUB 1010 Hook up mooring can harness.....	\$25/can

¹Deliveries require engine start and towing insurance

If you already have towing insurance, enter your TowBoat US towing policy # _____

Engine, Drive and Other Mechanical Services

___ ENG 100 Engine Start and Inspection..... <input type="checkbox"/> Single <input type="checkbox"/> Twin.....	<input type="checkbox"/> ENG 101 Generator.....	\$120/engine
___ ENG 250 Replace Anodes (zinc, magnesium, or aluminum)		\$55/ea
___ ENG 115 Gas Engine Tune Up (includes engine start)... <input type="checkbox"/> Single <input type="checkbox"/> Twin... <input type="checkbox"/> ENG 116 Gen ..		\$385/engine
___ ENG 300 Sea Trial (recommended after tune up for large gas engines)		\$110/hr
___ ENG 400 Engine Alignment (includes engine start)		\$220/shaft
___ ENG 500 Repack Stuffing Box (includes engine start)		\$220/shaft



SPRING 2016 SERVICES & PRICING GUIDE

Bottom Paint/Fiberglass/Painting/Gelcoat Services

- ___ FG 100 Bottom Paint, Rolled On (does not include bottom paint or roll kit)..... \$12/ft LOA
- ___ FG 110 Bottom Paint, Sprayed On (does not include bottom paint or spray kit)..... \$15/ft LOA
(roll/spray kits: to 35' \$60/\$70; 36'-45' \$65/75; 46' and up \$70/80)
- ___ FG 000 Gelcoat Touch Ups, Fiberglass Repairs and Painting.....Call me to discuss..... \$110/hr

Mast Stepping and Rigging Services

- ___ RIG 100 Step Mast - Full Service (step, tune, boom, halyards, pin and tape, electric) \$16/ft LOA
- ___ RIG 103 Step Mast and Tune Only (step, tune, pin and tape)..... \$14/ft LOA
- ___ RIG 110 Step Mast Only (NO tune, NO pin, NO tape) \$12/ft LOA
(A materials charge of \$20 per mast will be added to all mast stepping services)
- ___ RIG 400 Rig Sails to 34 feet LOA..... Genoa Main Mizzen\$140/sail
- ___ RIG 401 Rig Sails 35 to 39 feet LOA..... Genoa Main Mizzen\$165/sail
- ___ RIG 402 Rig Sails 40 to 44 feet LOA..... Genoa Main Mizzen\$220/sail
- ___ RIG 403 Rig Sails 45 to 49 feet LOA..... Genoa Main Mizzen\$275/sail
- ___ RIG 404 Rig Sails 50 feet and up LOA... Genoa Main Mizzen\$330/sail
- ___ RIG 405 Install Canvas\$55/piece
- ___ RIG 410 Furling System, Check Up \$110/furler + rig sail charge (see above)
- ___ RIG 411 Furling System, Full Service\$440/furler (only available from Nov-Mar)
- ___ RIG 415 Mooring Harness.....from \$175/harness
- ___ RIG 420 Winch Service (prices per speed – two speed winch is \$110 + materials)\$55/speed

Cleaning and Detailing Services

- ___ SUB 200 Basic Wash – Deck\$3.50/ft LOA
- ___ SUB 230 Basic Wash – Hullsides\$3.50/ft LOA
- ___ SUB 220 3-Step – Wash/Buff/Wax – Deck\$13.75/ft LOA
- ___ SUB 240 3-Step – Wash/Buff/Wax – Hullsides\$18.50/ft LOA
- ___ SUB 245 3-Step – Wash/Buff/Wax - ADD Flybridge\$150/each
- ___ SUB 260 Polish Exterior Stainless and Bronze \$69.50/boat
- ___ SUB 250 Clean Interior and Bilge \$45/hr
- ___ SUB 270 Clean Lifelines and Fenders \$69.50/boat
- ___ SUB 290 Clean cushions (priced per cushion and will vary – sml/med/lrg).....\$25-50/cushion

Other Spring/Summer Services

- ___ INS 200 Steering System Tune Up \$110/hr
- ___ ENG 900 Chicago Harbor Sanitation Inspection Report\$45/boat
- ___ SUB 650 Full Service Commissioning (engine starts will be added as necessary) \$250/boat
- ___ SUB 400 Jayne Parker Wood Refinishing Call me for an estimate
- ___ YRD 101 Summer Haul, Launch and Bottom Wash – Jun/Jul/Aug – Storage Cust Only ...\$12.00/ft LOA
- ___ STG 400/410 Storage Locker Rental\$55/mo or \$540/yr

Additional Services Requested:

Owner Signature: _____ Date: _____

Table of Contents

Helpful Commissioning Information 4
 Review your winter/spring work 4
 Complete the Spring Service Order Form with a departure date and time 4
 Scheduling Procedures 4
 Shrink-wrap Removal 4
 Before You Launch 4
 Keys 5
 On the Day of Departure 5
 During Your Cruise 5
Mechanical Services 5
 Engine Start & Inspection 5
 Gas Engine Tune Up 5
 Shaft Alignment 5
 Repack Prop Shaft Stuffing Box 5
 Anode (zinc) Replacement and Installation 6
Paint and Fiberglass Services 6
 Bottom Paint 6
 Gelcoat Touch Ups, Fiberglass Repairs & Painting 6
Rigging Services 6
 Mast Stepping - Full Service 6
 Rig Sails 7
 Furling System Services 7
 Winch Maintenance 7
 Other Services 7
Cleaning and Detailing Services 7
 Basic Wash 7
 Premier 3 Step Wash, Buff & Wax 7
 Stainless & Bronze Polishing 7
 Interior and Bilge Cleaning 8
 Lifeline & Fender Cleaning 8
 Cushion Cleaning 8
Other Services 8
 Steering System Tune Up 8
 Mooring Harnesses 8
 Chicago Harbor 2015 Marine Sanitation Inspection Report 8
 Boat Delivery Service 8
 Full Service Commissioning 8
 Wood Refinishing by Jayne Parker 9
 Exterior Teak Maintenance 9
 Summer Harbor Service 9
 Summer ½ Price Haul, Bottom Wash, Launch 9
 Locker Rental 9
 In/Out Service 9
Transportation 10
 Metra Shuttle 10
 Driving Directions 10
Yachtapalooza 10
Sailboat Sales Co. 11
Nautical Donations 11
Crowley's Yacht Yard Personnel Directory 12
 Managers 12
 Department Managers 12
 Customer Service and Accounting 12
 Ship's Store and Purchasing 12

Helpful Commissioning Information

Review your winter/spring work

Use this guide and the Spring Service Order Form as a checklist for work that needs to be done before launching. Contact customer service if you have any questions regarding what you need to do. Scheduling and ordering work **NOW** is highly recommended. As you know, work in the boat yard piles up in the spring. The more work we can get done now, the better. Make sure you allow time for inclement weather.

Complete the Spring Service Order Form with a departure date and time

Even if you plan on doing all your work yourself **you must return** the completed Spring Work Order Form to request your departure date and time. Mail, fax, hand deliver or submit via our web site your completed **Spring Service Order Form**. To avoid confusion, **please only submit one copy**. If you have any questions about the form or any services we provide call a customer service representative. Schedule a departure date and time as soon as possible. We schedule most spring work based on departure dates.

Scheduling Procedures

After we receive your **Spring Service Order Form** we will enter the appropriate work orders and schedule your departure. Please note: **Scheduling will be done on a first come, first served basis. Accounts must be current and be kept current to stay on the launch schedule.** DEPARTURE DATE is the date you choose to go to the harbor. LAUNCH DATE (the day we actually launch your boat) based on work loads and launch requirements. This day may be up to 5 days prior to your departure date. If your boat is stored inside, we will also set a MOVE DATE. This is the day we move your boat out of the storage building in order to complete any necessary outdoor work, i.e. step the mast, paint the bottom, etc. Let us know if you need to keep it inside for any reason, otherwise we will begin moving boats out of the buildings starting April 1st. Delayed move out may delay your departure date.

Shrink-wrap Removal

Shrink-wrap removal begins in mid-March and is scheduled based on your launch date. If you have any special needs that require your shrink-wrap to stay on longer, please contact the Customer Service Department.

Before You Launch

Leave 3 fenders and 4 dock lines in the cockpit for our launching crew. If you paint your own bottom, leave a can with a little bottom paint taped to your cradle. We will paint under your pads for you when we launch the boat. Replace all speedometer impellers and seal any through hulls. Make sure your safety equipment and registration is current. The Coast Guard and Conservation Police often make spot checks in the spring.

Keys

Leave a spare cabin entry key for your boat in the office and make sure we have the combination to any locks on the boat. If your boat requires keys for entry, please leave a spare set with us in case you need us to perform a harbor call later in the season.

On the Day of Departure

Park your car at the harbor. Use the Metra to get to the yard. Just give us a call from the 93rd Street Metra station and we will send a van to pick you up. You can find a schedule at: www.crowleys.com If you leave a car at Crowley's, unload at the docks then please park in the designated area. Arrive one hour prior to your scheduled departure. Check in with the Dock Master. Settle your service and store accounts at the office or the dock master's shack. Start your engine as soon as possible and let it warm up.

During Your Cruise

Be sure to check the weather forecast and be prepared. You will be on open water. Check in with the Dock Master to find a good time to traverse the river. He will monitor commercial traffic and communicate with the bridges. Please wait until they cast you off from the dock. Monitor Channel 16 for Calumet bridges and river traffic. Keep up with other boats while traversing the Calumet River.

Keep clear of all commercial traffic. Make sure you avoid the Hyde Park Shoal. The best way to do this is to pass east of the 68th Street Crib. If you have questions, consult a chart. If you feel you need assistance, hire one of Crowley's delivery captains.

Mechanical Services

Engine Start & Inspection

Crowley's engine start & inspection is the best way to minimize last minute surprises and start your season with confidence. After launching, a certified marine mechanic will start your engine and inspect your engine and related systems. A written report is left on your boat for your records. Minor repairs are made if time permits. If a significant problem is discovered during the engine start we will contact you to discuss your options.

Gas Engine Tune Up

New ignition components are installed to ensure that the ignition system fires properly. The carburetor and timing is adjusted as necessary to aid in quick starts and full power throughout the operating range. An engine start is included. In some cases, we recommend a sea trial to make sure that your engines are running in top condition after the tune up. The sea trial is an additional charge.

Shaft Alignment

Our shaft alignment is the key to smooth powering. Not only is the system adjusted, but other sources of vibration are checked and recommendations are made. It is necessary to run your engine to check the shaft alignment in the water, an engine start will be added to your shaft alignment work order.

Repack Prop Shaft Stuffing Box

We repack the stuffing box before the boat goes in the water. After the boat is launched a mechanic will run the engine and make adjustments. An engine start is included.

Anode (zinc) Replacement and Installation

Anti corrosion zincs protect valuable metal components from corrosion. Stray electrical current and galvanic corrosion can do irreparable damage to your propellers, shafts, struts, rudders, drives, and other components. These inexpensive anodes attract galvanic currents and corrode instead of other valuable metal items.

Paint and Fiberglass Services

Bottom Paint

We offer rolled or sprayed bottom paint. We start with a light sanding and then proceed with the bottom paint of your choice. For our house paint, we use BottomKote NT for our rolled paint and VC-17m for our sprayed bottom paint. We are happy to roll or spray any bottom paint of your choosing.

For a rolled bottom our crew will wipe down your existing bottom paint removing any dirt and loose or flaking material. We will carefully mask off the water line, shaft, propeller, depth transducer and any other required components and then roll on one coat of anti-fouling paint. We will paint under the pads and the bottom of the keel prior to launch.

Spraying is the standard finish for a VC17 bottom. Our crew will wipe down your existing bottom paint removing any dirt and loose or flaking material. We will carefully mask off the water line, topsides, shaft, propeller, depth transducer, and surrounding boats. We then spray a fresh coat of bottom paint. We will paint under the pads and the bottom of the keel prior to launch.

Gelcoat Touch Ups, Fiberglass Repairs & Painting

If you use your boat, no matter how careful or skilled you are, you will inevitably end up with nicks and gouges in your deck and hull sides. Crowley's routinely does complicated nonskid repairs, color matches and structural glass repairs. Please note that these are weather sensitive repairs. We will make every effort to complete gelcoat and paint touchups; however, inclement weather can sometimes prevent them from being completed before launch. Got a project? Let us know. On the Spring Service Order Form, check off "call me to discuss" and we will be in touch.

Rigging Services

Mast Stepping - Full Service

Our 21 point full service mast stepping includes a basic inspection, mast preparation, mast washing, boom preparation and installation, lighting check, stepping, tuning, taping, completing electrical connections, leading halyards back to the cockpit and rigging the main sheet and traveler.

Step Mast and Tune Rig Only

We build and step the mast, tune the rig and pin and tape the turnbuckles. You complete the boom and running rigging installation and connect the electrics.

Step Mast Only

We build and step the mast. You complete the tuning, pin and tape the turnbuckles, boom, running rigging installation and connect the electrics.

Rig Sails

Riggers will bend on your sails, adjust lazy jacks, stack packs, and boom covers. Due to the many requests that we get for this service, we will start installing them on mast-up storage boats in mid-March. If the shrinkwrap is still on we will remove it without any additional notice. Canvas or tarp covers will incur an additional charge for removal.

Furling System Services

Modern furlers are precision systems that many sailors take for granted. Proper operation of your furler in critical situations is essential for safe boating.

Check-Up Service: Riggers will rinse and lubricate the bearings (if needed), install the furling sail and check the furler operation (sail charges extra).

Full Service Furler Inspection: Riggers will perform a detailed inspection and service that includes joint maintenance, track cleaning, bearing maintenance, a forestay inspection. You will receive a call from us if you need a section of track or a joint replaced. This service is available year round, but is typically performed between November and March. Mast up boats will incur additional charges to remove and replace the furler.

Winch Maintenance

Winch maintenance includes complete disassembly, inspection, cleaning, repair, lubrication and reassembly of your winches. There are extra charges to clean your winches if they have not been serviced recently. Repairs to your winch are extra. NOTE: Charges are billed per speed of the winch, so a two speed winch is \$55/speed times 2 speeds which equals \$110 for the service.

Other Services

Navtec Hydraulic repairs and service, custom & traditional rope splicing, Navtec rod heading, wire swaging, mast and rigging inspections. Please call us for details.

Cleaning and Detailing Services

Basic Wash

The cleaning crew will soap, scrub and rinse the hull side or deck as ordered the day of or before departure. This is an economical way to get the boat free of surface dirt.

Premier 3 Step Wash, Buff & Wax

This is the best way to restore a shine and protect your investment. The cleaning crews perform a basic wash. Next, they compound and buff the smooth surfaces with a power buffer. The boat is then protected and sealed with a coating of wax. Customers that order the three step deck service will also receive a complimentary deck wash on the day before their departure.

Stainless & Bronze Polishing

Our crew will polish your entire exterior stainless. Bow pulpits, stanchions, grab rails & winches will shine like new.

Interior and Bilge Cleaning

We customize this service to meet your needs. A representative will contact you to tailor the service for you.

Lifeline & Fender Cleaning

Lifelines & fenders get dirty. Our crew will get them clean again. Besides being unsightly, dirty fenders can scratch and stain hull sides. This service covers up to 4 fenders and all of your lifelines.

Cushion Cleaning

Fresh, clean cushions make a boat an inviting and warm place. Regular cushion cleaning helps prevent mildew and keeps your boat smelling new. Cushions are removed, taken to a steam cleaning facility, cleaned and sanitized, deodorized, bagged and then returned to your boat.

Other Services

Steering System Tune Up

Our crew will inspect and perform recommended maintenance of this critical and often overlooked system. If you have not been down in your lazarette and personally inspected this system lately, then you need to order this service.

Mooring Harnesses

Our handmade harnesses are custom made with the finest materials. Each harness is custom fit to your boat.

Chicago Harbor 2015 Marine Sanitation Inspection Report

The Chicago Park District is strictly enforcing local and federal laws relating to the discharge of waste into the lake. Crowley's will issue the required CPD "Certificate of Compliance" or recommend corrective actions. Check with your Harbor Master regarding the latest regulations. The Park District requires that this be done annually.

Boat Delivery Service

We offer turn-key deliveries between Crowley's Yacht Yard and Chicago area harbors. **The service will require proof of towing insurance.** Call customer service to arrange a convenient delivery date. **Customers utilizing this service must order an engine start.**

Full Service Commissioning

This service is for owners who would like to step aboard their boat and go. A representative will install any canvas, flush & fill water tanks, install cushions, perform a deck wash at launch, test all systems and make sure all the details are attended to. A service representative will call you to assess your needs. **Customers utilizing this service must also order an engine start.** This service will be performed after the boat is launched, just prior to departure. Minor repairs are made if time permits. Otherwise, we will note any discoveries on the commissioning report and suggest you schedule a harbor call after the spring rush. If a significant problem is discovered during the full service commissioning, we will contact you to discuss your options.

Wood Refinishing by Jayne Parker

Discriminating boaters in Chicago have known for years that Jayne Parker does the best bright work refinishing and maintenance in the area. Jayne has the know how to restore your bright work and make it sparkle.

Exterior Teak Maintenance

Three Twins Yacht Maintenance Service is offering a teak maintenance service for boaters who just need basic exterior teak maintenance.

Summer Harbor Service

During the summer we send our crew to the Chicago and Hammond harbors daily. If you need help once you are at your summer mooring, give us a call. We charge for time spent on the boat with a 1 hr minimum. No charge for travel time. **Harbor service is offered after June 1st.**

Summer 1/2 Price Haul, Bottom Wash, Launch

If you store your boat at Crowley's, we will haul it in July, August or September and pressure wash it for less than half of your standard haul, wash, launch price.

Locker Rental

Crowley's is pleased to offer storage locker rental for all of your excess boat gear. Get all of your extra gear off of your boat and keep it at the yard where it belongs. We will bring one of these portable storage cubes right to your boat once in the spring and once in the fall, so you can load and unload your gear directly to and from your locker. You have access to your locker year round, anytime during business hours.

In/Out Service

Crowley's operates an in/out service. This service is designed for the 16 to 30 ft power boat owner that wants to keep their boat high and dry when it is not in use. Just give us a ring and we will use our 20,000 lb. capacity forklift to gently set your boat in the water. No mooring fees, no bottom paint, no parking hassles, no towing your boat to the lakefront, no launch ramp hassles. Just pick up the phone and go boating. You get unlimited launching and service area access during business hours. During the season, we will be open 7 days a week. The service is available for larger boats, call for pricing. The pricing below is per month.

LENGTH	OUTDOOR	INDOOR
16	202	269
17	214	286
18	227	302
19	239	319
20	252	336

LENGTH	OUTDOOR	INDOOR
21	265	353
22	277	370
23	290	386
24	302	403
25	315	420

LENGTH	OUTDOOR	INDOOR
26	328	437
27	340	454
28	352	470
29	365	487
30	378	504

Transportation

Metra Shuttle

Hop on the Metra Electric commuter rail line for a quick trip to Crowley's. Find the latest schedule at <http://metrarail.com> Crowley's will be happy to shuttle riders to and from the 93rd Street/South Chicago Station. **To be picked up at the 93rd Street Station, give us a call when you arrive at the station and we will send a van to pick you up.**

Driving Directions

The Crowley's Yacht Yard Service Office is located at 3421 E. 95th Street (south side of 95th).

To Crowley's Lakeside VIA Lake Shore Drive

Take Lake Shore Drive South to 67th / Marquette Blvd. (just past Jackson Park Harbor)
Lake Shore Drive turns into South Shore Drive (Rt 41), Follow the Rt 41 signs to 95th Street
Turn right on 95th Street to Crowley's Yacht Yard entrance, 1 block on the left side of street

To Crowley's Lakeside VIA I-94/ Skyway

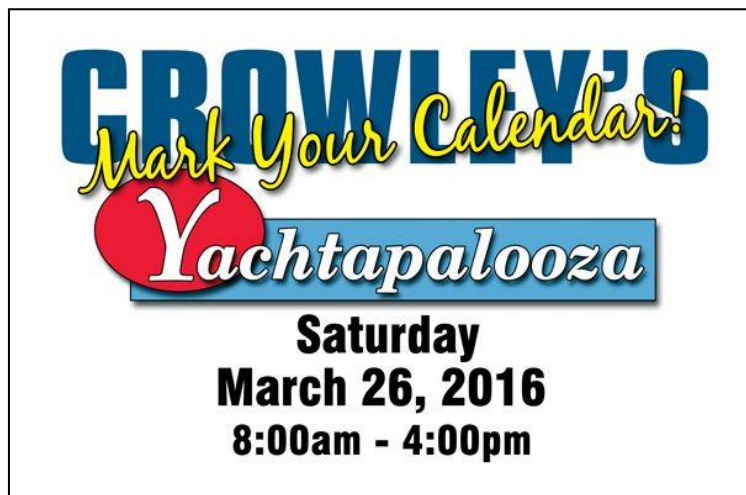
Take I-94 to the Skyway, Exit the Skyway at the 92nd Street (the first exit after you pay the toll)
Left at 92nd Street, go 1 block to South Chicago Blvd, Turn right on South Chicago ½ mile to 95th Street
Turn left on 95th Street; go over the Calumet River on the 95th Street Bridge to Crowley's Lakeside

To Crowley's Lakeside VIA I-94/Bishop Ford

Take I-94 to the *North Stony Island to 95th / 103rd* exit, Follow the *North Stony Island to 95th* exit sign to the first stop light. Turn right on 95th Street, proceed approximately 1.5 miles – over the Calumet River to the Crowley's Yacht Yard entrance

Yachtapalooza

Join us for a day of fun on Saturday March 26 that includes free seminars, special deals in the Ship's Store, a charity flea market, raffles, giveaways and more. Yachtapalooza has become one of Chicago's boating traditions. Marine industry vendors are coming and we are going to have demonstrations and live music. Help us mark the beginning of spring and the start of the boating season.



Sailboat Sales Co.

Sailboat Sales continues to offer the experience and expertise that come with over thirty years of continuous operation and management. Our selection of pre-owned brokerage boats is among the largest and most varied in the industry, so whether you want to race, cruise the Great Lakes (or the world!), or spend weekends on Chicago's beautiful lakefront, chances are that we have the boat that will fit your needs. Our working relationship with brokers nationwide and our affiliation with Yachtworld.com will allow us to find the boat that fits your needs perfectly.

As a member of the Yacht Brokers Association of America since 1991, we comply with the high standards that organization has set, while providing expert and reliable counsel during all the steps that lead up to a boat purchase, and those that go beyond it. We work with you to find the right boat at the right price. We can also help you in selecting the right marine surveyor, access marine financing and marine insurance, arrange transport, and help you obtain the best possible mooring.

Our close association with Crowley's allows us to suggest the most appropriate improvements for your boat. We can help you with upgrades such as marine electronics, boat maintenance, as well as the expert wood refinishing skills of Jayne Parker. Our working relationship with all of the local and regional sail makers helps us to insure that your sail inventory will get the attention it deserves.

We invite you to come visit our boat yard and see all we have to offer. We look forward to many more years of serving the needs of the Chicago area sailing community.

Sincerely,

Bruce Rosenzweig
Mike Rosenzweig
David Rosenzweig

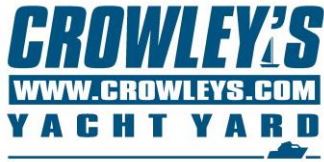
For more information, please visit our web site: www.sailboatsalesco.com

Nautical Donations

Nautical Donations, Inc. accepts donations of boats and then sells them or puts them into service with one or more of our charitable organizations. We also accept donations of nautical equipment that is then sold or put into service. As a donor you can decide which participating organization or organizations will receive the proceeds of your boat donation. The benefit to you as a donor is a tax deduction for the amount that the boat is ultimately sold for under auction.

Every March Nautical Donations, Inc. holds a flea market during Yacht-a-palooza, selling off donated equipment. Yachtapalooza is sponsored by Crowley's Yacht Yard This is a great opportunity for the boating community to support our organizations. We encourage boaters to clear out their garage or storage locker before the boating season gets underway. The flea market features plenty of great bargains including seldom-used equipment and hard-to-find hardware.

Nautical Donations, Inc. sells donated boats and equipment throughout the year. In the last three years, we sold 25 boats ranging in size from 21' to 37'. Visit our website: www.nauticaldonations.org or call us at 773-672-2080 for more information.



SPRING 2016 SERVICES & PRICING GUIDE

Crowley's Yacht Yard Personnel Directory

Managers

Grant Crowley, Owner	Phone: 773-364-1310	Email: grant@crowleys.com
Dan Bochnovic, Manager	Phone: 773-364-1301	Email: dan@crowleys.com
Phil Pollard, Sales Manager	Phone: 773-364-1304	Email: pmp@crowleys.com
Andrew Spaulding, Prod. Manager	Phone: 773-364-1333	Email: andrew@crowleys.com

Department Managers

John Spies, Fiberglass Manager	Phone: 773-364-1302	Email: jspies@crowleys.com
Kathy Lindt, Installation Manager	Phone: 773-364-1338	Email: kat@crowleys.com
Jon Paige, Rigging Manager	Phone: 773-364-1339	Email: jon@crowleys.com
Jeff Strunka, Yard Manager	Phone: 773-364-1312	Email: jeff@crowleys.com
Jeremy Hutchinson, Mech Manager	Phone: 773-364-1315	Email: jeremy@crowleys.com

Customer Service and Accounting

Mark Bailey, Yacht Specialist	Phone: 773-364-1334	Email: mbailey@crowleys.com
Mitch Weisman, Yacht Specialist	Phone: 773-364-1335	Email: maw@crowleys.com
John Ponsetto, Yacht Specialist	Phone: 773-364-1332	Email: jponsetto@crowleys.com
Carole Boulais, Accountant	Phone: 773-364-1337	Email: clb@crowleys.com
Marciela Sabala, Asst. Accountant	Phone: 773-364-1336	Email: mhs@crowleys.com

Ship's Store and Purchasing

Mike Travis, Store Mgr	Phone: 773-364-1345	Email: mjt@crowleys.com
Nick Fugate, Purchasing Manager	Phone: 773-364-1351	Email: nmf@crowleys.com